

山东锐驰机械有限公司
突发环境事件应急救援预案

2015. 8. 13

2015. 8. 20

山东锐驰机械有限公司

突发环境事件应急预案批准业

突发环境事件应急救援预案发布令

34
4

2015

2015 7 29

2015

1	(1)
1.1	(1)
1.2	(1)
1.3	(1)
1.4	(1)
1.5	(2)
2	(3)
2.1	(3)
2.2	(3)
3	(5)
3.1	(5)
3.2	(6)
3.3	(6)
3.4	(6)
3.5	(6)
3.6	

7	(13)
7.1	(13)
7.2	(13)
7.3	(13)
8	(14)
8.1	(14)
8.2	(15)
8.3	(15)
8.4	(15)
8.5	(15)
9	(15)
9.1	(15)
9.2	(16)
10	(16)
11	(17)
11.1	(17)
11.2	(17)
11.3	(17)
11.4	(17)
12.	(17)
12.1	(18)
12.2	(25)

1

1.1

1.2

1.2.1 2014

1.2.2 2000

1.2.3 34

1.2.4

2015 4

1.2.5 1996

1.2.6 1996

1.2.7 17

1.2.8 (80)

1.2.6 2003 9

1.2.6 2002

1.2.6 1991

1.2.6 1998 253

1998 11

1.2.6 1996

1.2.9

(2010 3)

1.2.10

AQ/T9002-2006

1.2.11 GB18218-2009

1.2.12

2004 56

1.2.13 344

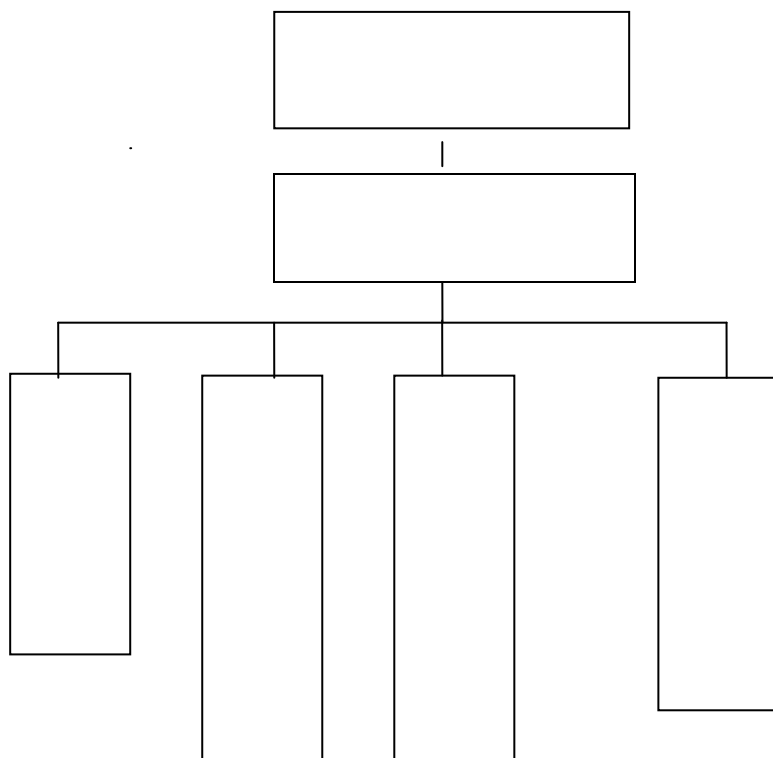
1.2.14

1.3

1.4

1

4



1.5

1.5.1

1.5.2

1.5.3

1.5.4

1.5.5

2

2.1

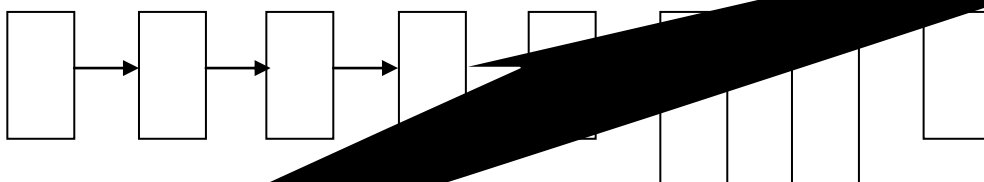
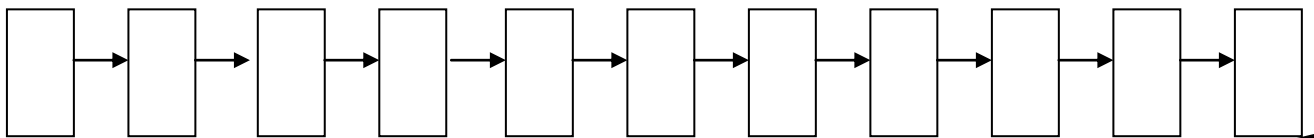
10

10

200

100

}



NaOH

NaSO₃
HSO₄ PAM

	HW17 346-060-17				3		
	HW12 900-252-12				5		
/ /	HW49 900-041-49				0.5		
	HW08 900-202-08				0.5		
	HW09 900-006-09				0.5		

2. 2

2. 2. 1

2. 2. 2

2. 2. 2. 1

2. 2. 2. 2

2. 2. 2. 3

3. 2

3. 3

a)

b)

c)

3. 5

3. 6

3. 6. 1

3. 6. 2

3. 6. 3

3. 6. 4

3. 6. 5

3. 6. 6

3. 6. 7

3. 6. 8

3. 6. 9

4

4. 1

4. 1. 1

1

2

3

1

2

3

4

4. 1. 2

4. 1. 2. 1

1

2

3

1

2

3

4. 1. 2. 2

1

2

1%

3

4

1

2

3

4

4. 1. 2. 3

1

1 1

1 2

1 3

3

3 1

3 2

3 3

3 4

3 5

3 6

3 7

4

4 1

4 2

4 3

4 4

4 5

4 6

4 7

5

5 1

5 2

5 3

5 4

5 5

1

2

4. 1. 2. 6

10

4. 2

4. 3

4. 3. 1

24

8932251

8932263

24

4. 3. 2

4. 3. 3¹

1 3
2
3 4 5
5.2

5.3

5.3.1
5.3.1.1

5.3.1.2

5.3.2
5.3.2.1

5.3.2.2

5.4

5.4.1
5.4.1.1

5.4.1.2
5.4.1.3

5.4.2

6

6.1

6.1.1

6.1.2

6.2

6.3

7

7.1

7.2

24

7.3

8

8.1

			8932299	13853862579
			8932289	13805485074
			8932287	15205385819
			8932256	13805485074
			8932288	13505485992
			8932257	13583856950
			8932257	13705389907
			8932257	13455730451
			8932261	13562805580
			8932265	13854865023
			8932258	15588591196
			8932298	13563800623
			8932282	13405489465
			8932296	13953890170
			8932286	13562890978
			8932267	13953822824

	8938791
	8938364
	8938362
	8911032
	8938266
	6621110
	8911036
	6237120
	120
	110
	119
	122

8. 2

8.3

	500V	3			
		2			
		5			
		188			
		100			
		2			

8.4

5

8.5

9

9.1

9.1.1

9.1.2

9.1.2.1

9.1.2.2

9.1.2.3

9.1.2.4

9.2

9.2.1

9.2.2

10

10.1

,

10.2

10.3

10.3.1

10.3.2

10.3.3

10.3.4

10.4

10.4.1

10.4.2

10.4.3

10.4.4

11

11.1

11.1.1

11.1.2

11.2

11.3

11. 3. 1
11. 3. 2

11. 3. 3

11. 4

12

12. 2. 1
12. 2. 2
12. 2. 3